

3.6 metre Truss

User Manual

Read in conjunction with
Kwiktech Build Guide and
Kwiktech Tips & Tricks

Designed by

kwiktech.

Engineered by

sbec. SCHMIDT
BENTLEY
ENGINEERING
CONSULTING

Rating: 8KN

as per Truss Length

Rev 2

This Manual is the sole property of
Kwiktech Pty Ltd.
All rights are reserved.

This Manual is designed to be only
used with Kwiktech
produced products.

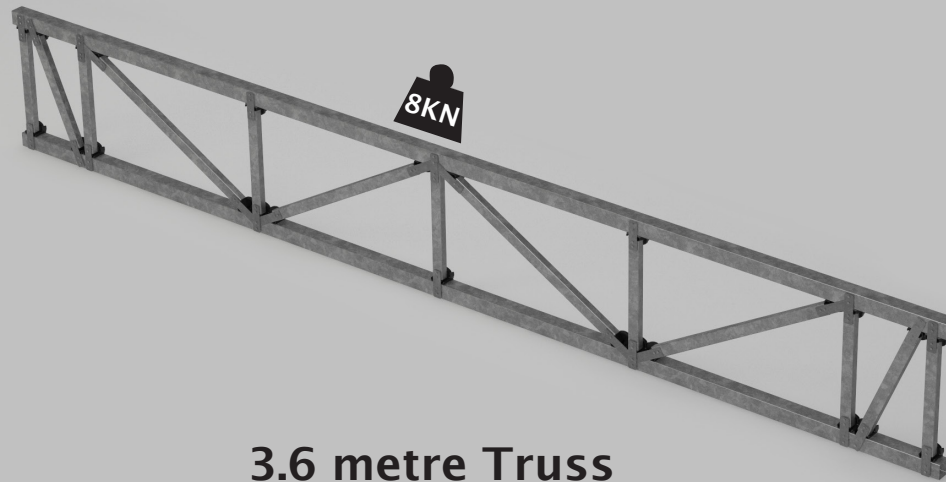
No part of this Manual or the
Kwiktech product design may be
copied or reproduced without the
consent of Kwiktech Pty Ltd.

Construction using Kwiktech
products may require planning
approval. Always contact your Local
Council for the most up-to-date
rules and regulations for your area.

All dimensions are in millimeters
(mm)

www.kwiktech.com.au

© Kwiktech Pty Ltd 2022



3.6 metre Truss

Material List

3.6 metre Truss

User Manual

Read in conjunction with Kwiktech Build Guide and Kwiktech Tips & Tricks

Designed by



Engineered by



Rating: 8KN

as per Truss Length

Rev 2

This Manual is the sole property of Kwiktech Pty Ltd. All rights are reserved.

This Manual is designed to be only used with Kwiktech produced products.

No part of this Manual or the Kwiktech product design may be copied or reproduced without the consent of Kwiktech Pty Ltd.

Construction using Kwiktech products may require planning approval. Always contact your Local Council for the most up-to-date rules and regulations for your area.

All dimensions are in millimeters (mm)

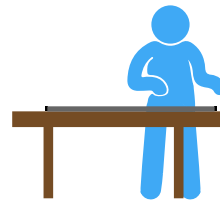
3.6m TRUSS KWIKTECH KITS

ITEM	LENGTH	COLOUR	QUANTITY	RESELLER PRICE
Kwiktech Truss Kit (NOTE: Some items will not be used)	-	-	1	

3.6m TRUSS NON KWIKTECH ITEMS

ITEM	ITEM ID #	ASSEMBLY ID #	LENGTH	COLOUR	QUANTITY	RESELLER PRICE
SHS 50x50x1.5 or 1.6mm	①		3600	Galv	2	
RHS 38x25x1.2 or 1.6mm	②		685	Galv	4	
RHS 38x25x1.2 or 1.6mm	③		402	Galv	2	
RHS 38x25x1.2 or 1.6mm	④		366	Galv	7	

Build Preparation



Rail Inserts



End Inserts (Optional)



Universal Connectors

REQUIRED KWIKTECH ITEMS (INCLUDED IN KITS)

ITEM	QUANTITY	ITEM	QUANTITY
Post Connector (KT-P-001)	0	10G x 16 Self Drilling Wafer Head Screw	156
Universal Connector (KT-P-002)	26	M6 x 40 Socket Head Cap Screw - Zinc	26
Rail Inserts (KT-P-003)	18	M6 x 20 Hex Head Bolt - Galv	0
60° Rail Inserts (KT-P-004)	8	M6 Nut - Galv	0
Star Picket Guide (KT-P-005)	0	Kwiktech 2mm Displacement Plate	14
Post Cap (KT-P-006)	0	Right Angle Bracket - Zinc	0
Tension Strapping 0.8 x 30 x 85mm	18	Assembly Wedge - Rubber	0
Tension Strapping 0.8x 30 x 95mm	0	10G x 16 Self Drilling Small Head Flat Top Screw	104
Tension Strapping 0.8 x 30 x 135mm	8		
Tension Strapping 0.8 x 30 x 250mm	0		

HOLLOW METAL

ITEM	TOTAL LENGTH
Duragal 50x50x1.5mm	7.2m
Duragal 38x25x1.2mm	6.5m

**FOR
INFORMATION
ONLY**

Member Locations

3.6 metre Truss

User Manual

Read in conjunction with
Kwiktech Build Guide and
Kwiktech Tips & Tricks

Designed by

kwiktech.

Engineered by

sbec. SCHMIDT
BENTLEY
ENGINEERING
CONSULTING

Rating: 8KN

as per Truss Length

Rev 2

This Manual is the sole property of
Kwiktech Pty Ltd.
All rights are reserved.

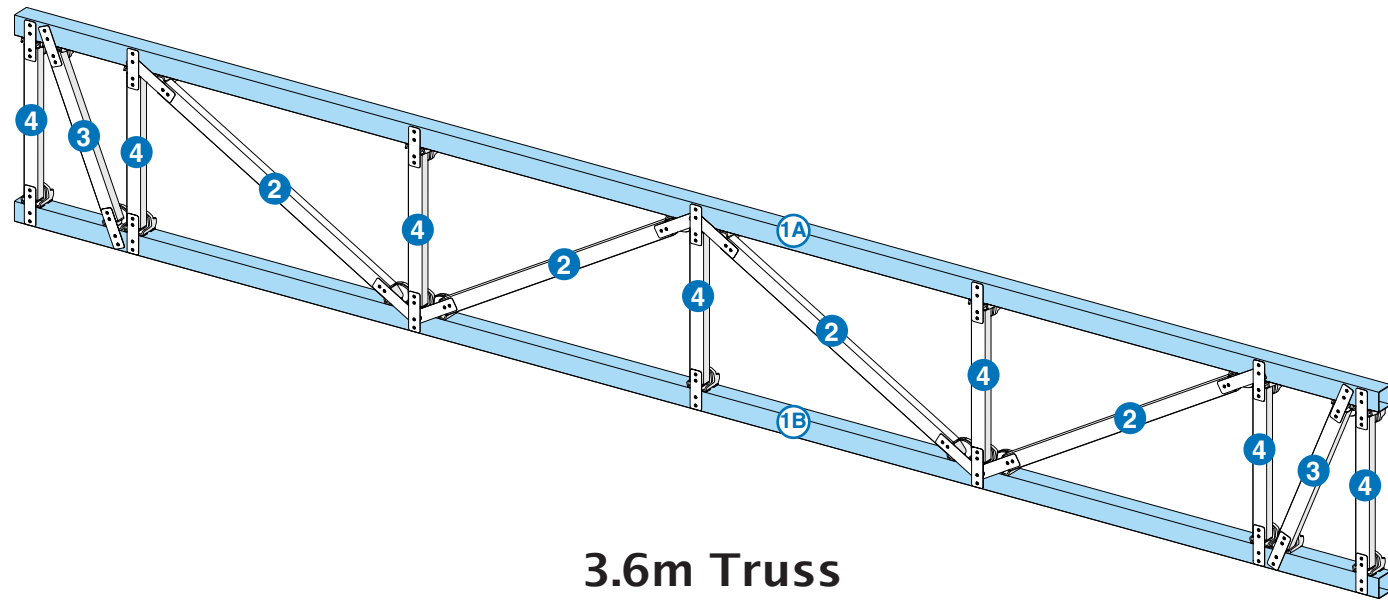
This Manual is designed to be only
used with Kwiktech
produced products.

No part of this Manual or the
Kwiktech product design may be
copied or reproduced without the
consent of Kwiktech Pty Ltd.

Construction using Kwiktech
products may require planning
approval. Always contact your Local
Council for the most up-to-date
rules and regulations for your area.

All dimensions are in millimeters
(mm)

www.kwiktech.com.au
© Kwiktech Pty Ltd 2022



3.6m Truss

Rail Assembly

3.6 metre Truss

User Manual

Read in conjunction with
Kwiktech Build Guide and
Kwiktech Tips & Tricks

Designed by

kwiktech.

Engineered by

sbec. SCHMIDT
BENTLEY
ENGINEERING
CONSULTING

Rating: 8KN

as per Truss Length

Rev 2

This Manual is the sole property of
Kwiktech Pty Ltd.
All rights are reserved.

This Manual is designed to be only
used with Kwiktech
produced products.

No part of this Manual or the
Kwiktech product design may be
copied or reproduced without the
consent of Kwiktech Pty Ltd.

Construction using Kwiktech
products may require planning
approval. Always contact your Local
Council for the most up-to-date
rules and regulations for your area.

All dimensions are in millimeters
(mm)

www.kwiktech.com.au
© Kwiktech Pty Ltd 2022

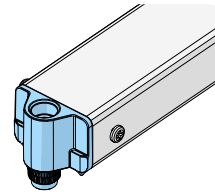
Rail Setup

Refer to build guide for
assembly details.

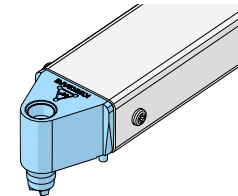
All members have a Standard
insert unless otherwise noted.

Mark item ID on each member.

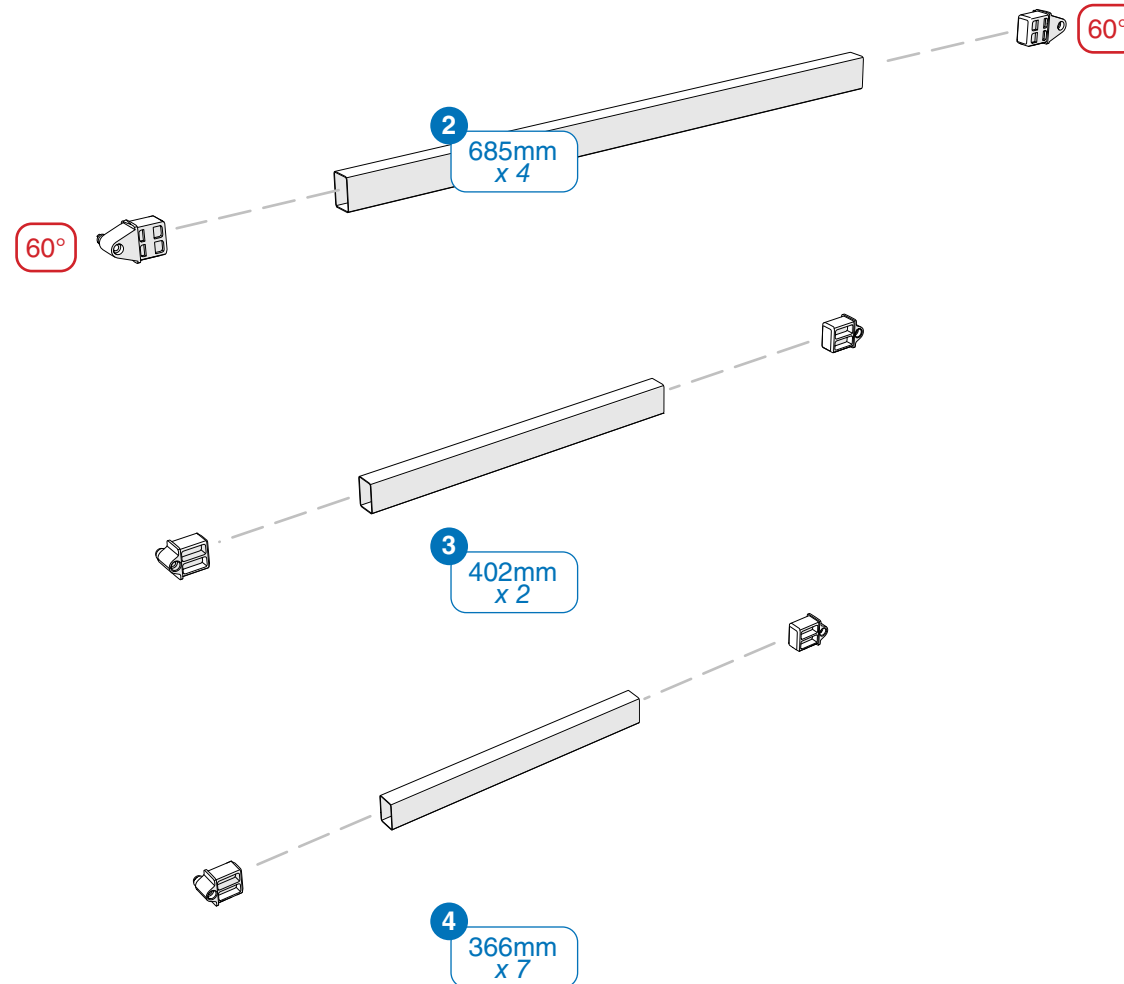
RAIL INSERT TYPES



Standard



60°



Approximate time
required: 1 Hours

End Inserts (Optional)

3.6 metre Truss

User Manual

Read in conjunction with
Kwiktech Build Guide and
Kwiktech Tips & Tricks

Designed by

kwiktech.

Engineered by

sbec. SCHMIDT
BENTLEY
ENGINEERING
CONSULTING

Rating: 8KN

as per Truss Length

Rev 2

This Manual is the sole property of
Kwiktech Pty Ltd.
All rights are reserved.

This Manual is designed to be only
used with Kwiktech
produced products.

No part of this Manual or the
Kwiktech product design may be
copied or reproduced without the
consent of Kwiktech Pty Ltd.

Construction using Kwiktech
products may require planning
approval. Always contact your Local
Council for the most up-to-date
rules and regulations for your area.

All dimensions are in millimeters
(mm)

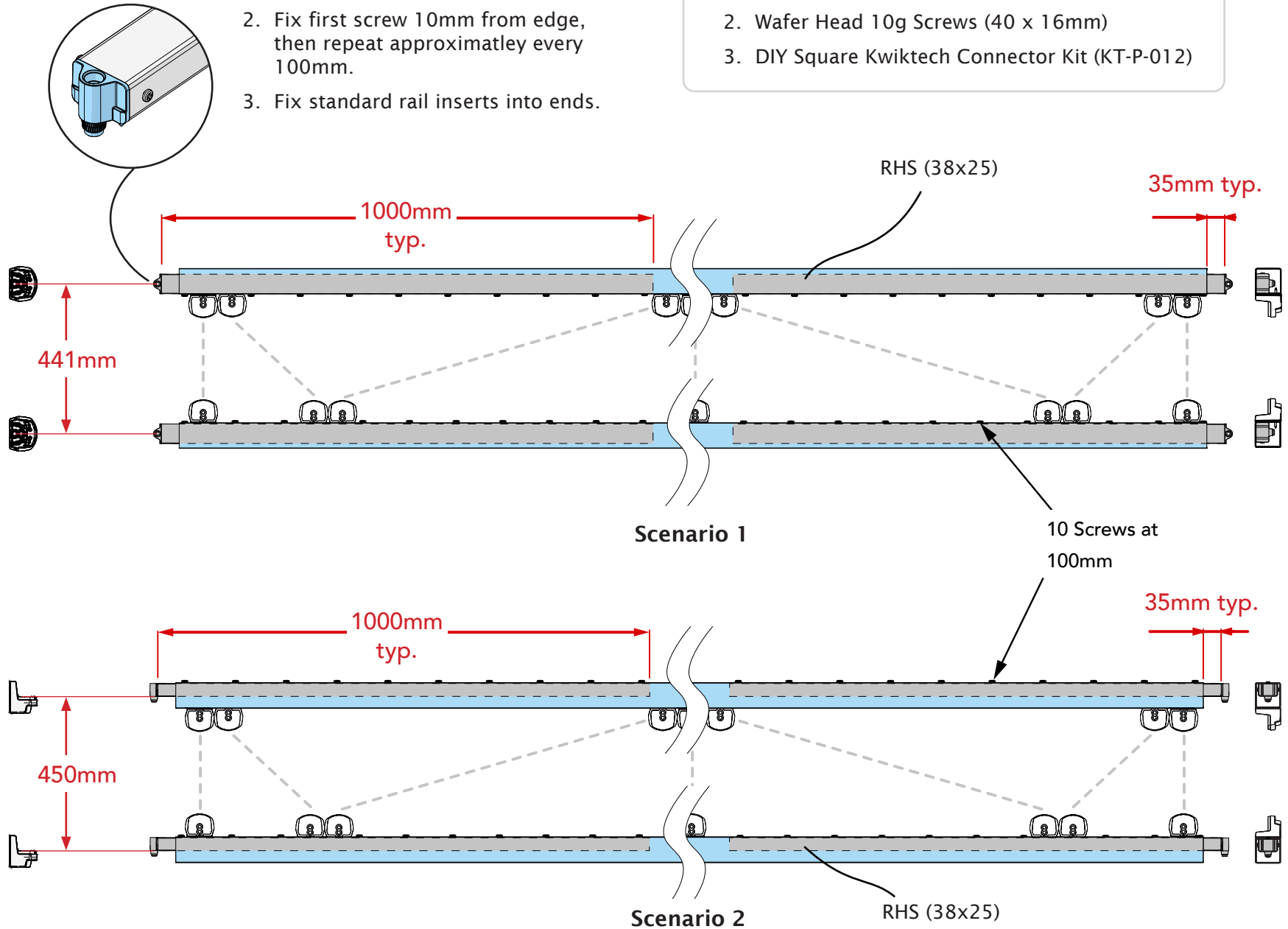
www.kwiktech.com.au
© Kwiktech Pty Ltd 2022

Install Sequence

1. Insert RHS (38x25)
2. Fix first screw 10mm from edge, then repeat approximately every 100mm.
3. Fix standard rail inserts into ends.

Additional Materials:

1. 38x25x1.2 or 1.6mm RHS (4 x 1000mm)
2. Wafer Head 10g Screws (40 x 16mm)
3. DIY Square Kwiktech Connector Kit (KT-P-012)



Universal Connector Locations

3.6 metre Truss

User Manual

Read in conjunction with Kwiktech Build Guide and Kwiktech Tips & Tricks

Designed by

kwiktech.

Engineered by

sbec. SCHMIDT BENTLEY ENGINEERING CONSULTING

Rating: 8KN

as per Truss Length

Rev 2

This Manual is the sole property of Kwiktech Pty Ltd. All rights are reserved.

This Manual is designed to be only used with Kwiktech produced products.

No part of this Manual or the Kwiktech product design may be copied or reproduced without the consent of Kwiktech Pty Ltd.

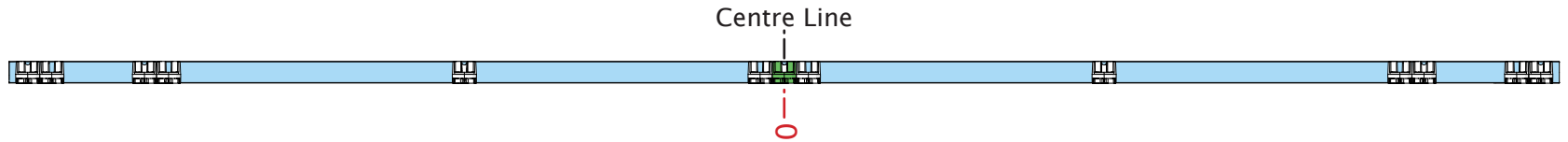
Construction using Kwiktech products may require planning approval. Always contact your Local Council for the most up-to-date rules and regulations for your area.

All dimensions are in millimeters (mm)

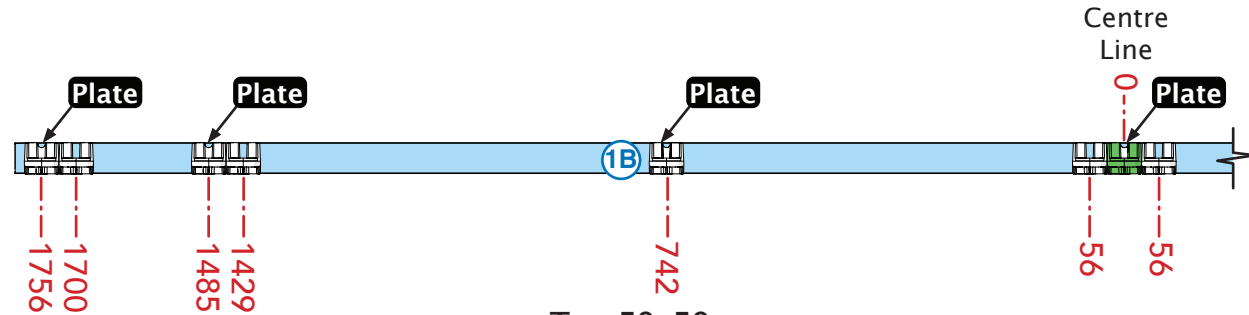
www.kwiktech.com.au
© Kwiktech Pty Ltd 2022



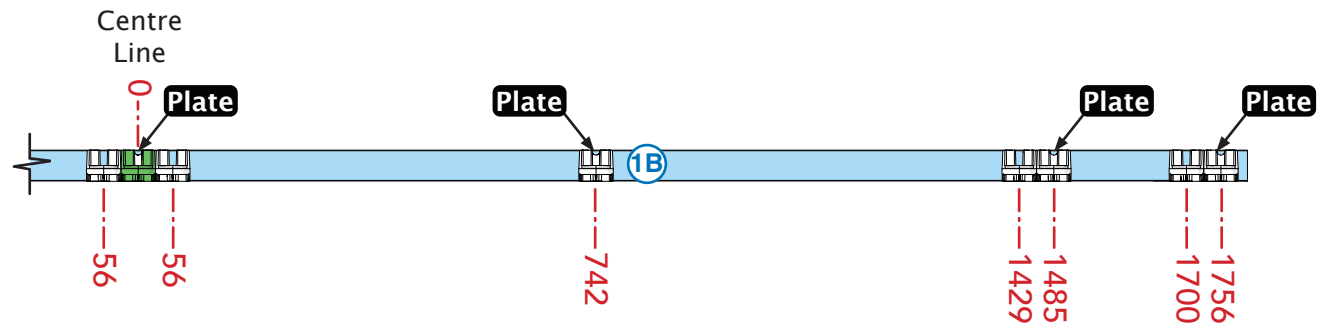
WAIT! Refer to page 5 if you require End Inserts



Reference Image of the full 50x50 member.
0 dimension in the middle of it.
0 point in both images below is the same connector.



Top 50x50
Left Side



Top 50x50
Right Side

Approximate time required: 1 Hour

Universal Connector Locations

3.6 metre Truss

User Manual

Read in conjunction with
Kwiktech Build Guide and
Kwiktech Tips & Tricks

Designed by

kwiktech.

Engineered by

sbcc. SCHMIDT
BENTLEY
ENGINEERING
CONSULTING

Rating: 8KN

as per Truss Length

Rev 2

This Manual is the sole property of
Kwiktech Pty Ltd.
All rights are reserved.

This Manual is designed to be only
used with Kwiktech
produced products.

No part of this Manual or the
Kwiktech product design may be
copied or reproduced without the
consent of Kwiktech Pty Ltd.

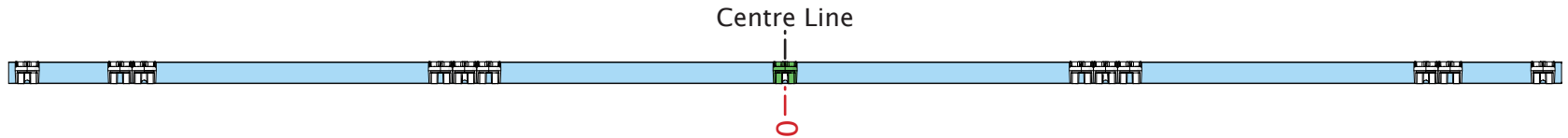
Construction using Kwiktech
products may require planning
approval. Always contact your Local
Council for the most up-to-date
rules and regulations for your area.

All dimensions are in millimeters
(mm)

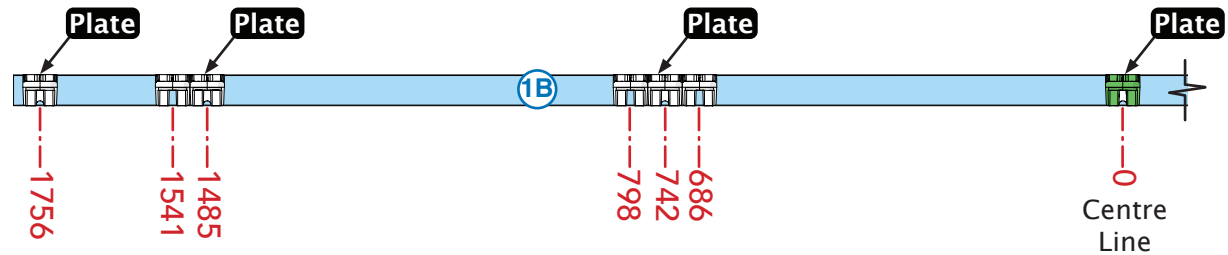
www.kwiktech.com.au
© Kwiktech Pty Ltd 2022



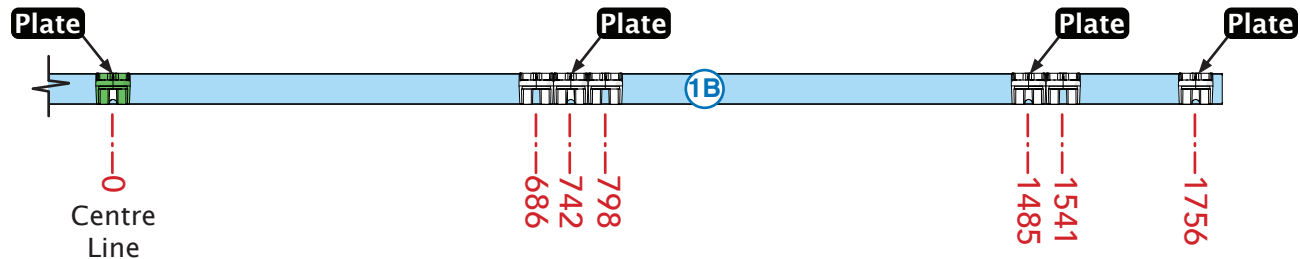
WAIT! Refer to page 5 if you
require End Inserts



Reference Image of the full 50x50 member.
0 dimension in the middle of it.
0 point in both images below is the same connector.



Bottom 50x50
Left Side



Bottom 50x50
Right Side

Approximate time
required: 1 Hour

Assembly Sequence

3.6 metre Truss

User Manual

Read in conjunction with
Kwiktech Build Guide and
Kwiktech Tips & Tricks

Designed by

kwiktech.

Engineered by

sbec. SCHMIDT
BENTLEY
ENGINEERING
CONSULTING

Rating: 8KN

as per Truss Length

Rev 2

This Manual is the sole property of
Kwiktech Pty Ltd.
All rights are reserved.

This Manual is designed to be only
used with Kwiktech
produced products.

No part of this Manual or the
Kwiktech product design may be
copied or reproduced without the
consent of Kwiktech Pty Ltd.

Construction using Kwiktech
products may require planning
approval. Always contact your Local
Council for the most up-to-date
rules and regulations for your area.

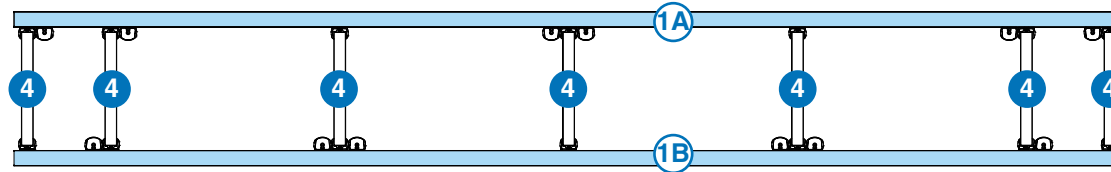
All dimensions are in millimeters
(mm)

www.kwiktech.com.au
© Kwiktech Pty Ltd 2022

Construct on the ground. Flat.
(Images show steel upright for clarity)

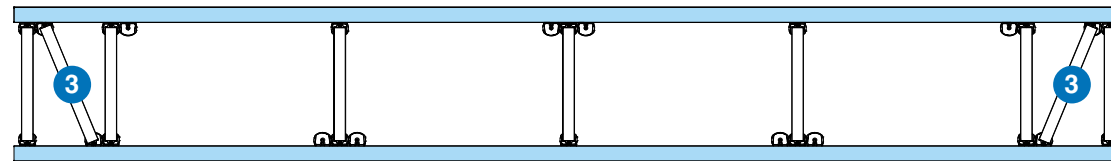
Step 1

Attach the 9 items below



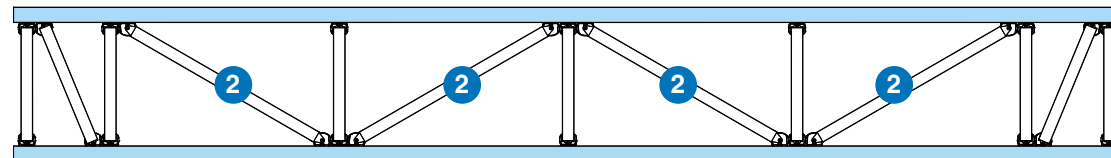
Step 2

Attach the 2 rail items below



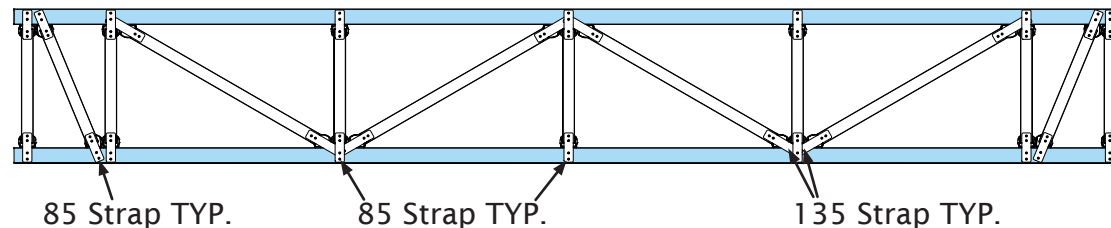
Step 3

Attach the 4 rail items below

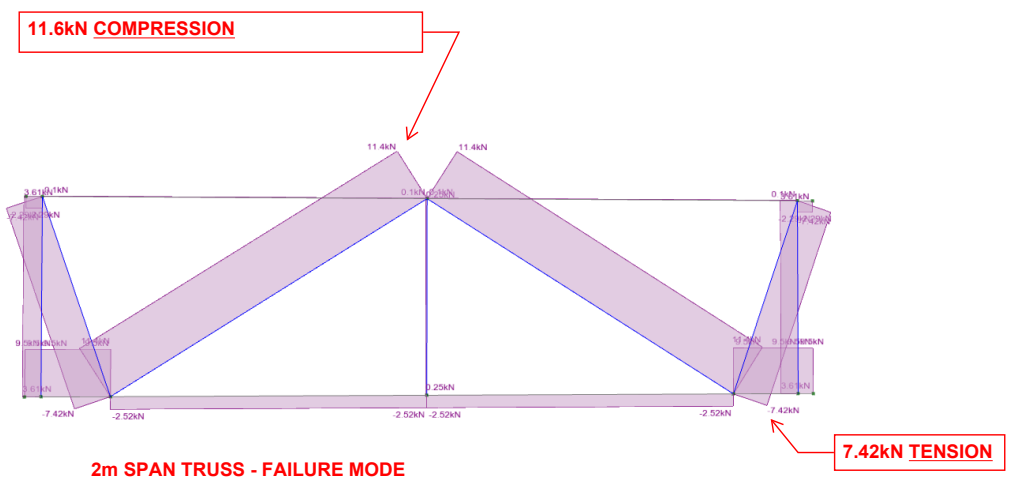
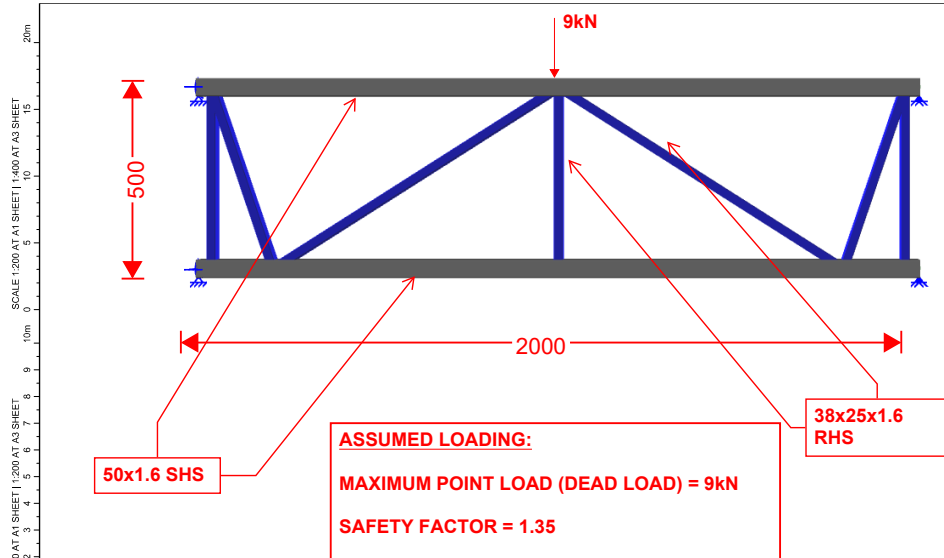


Step 4

Attach the straps below



Approximate time
required: 1 Hour



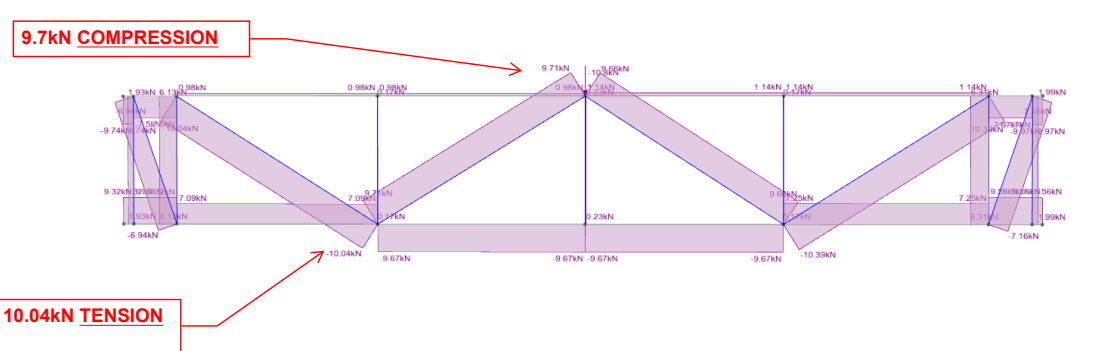
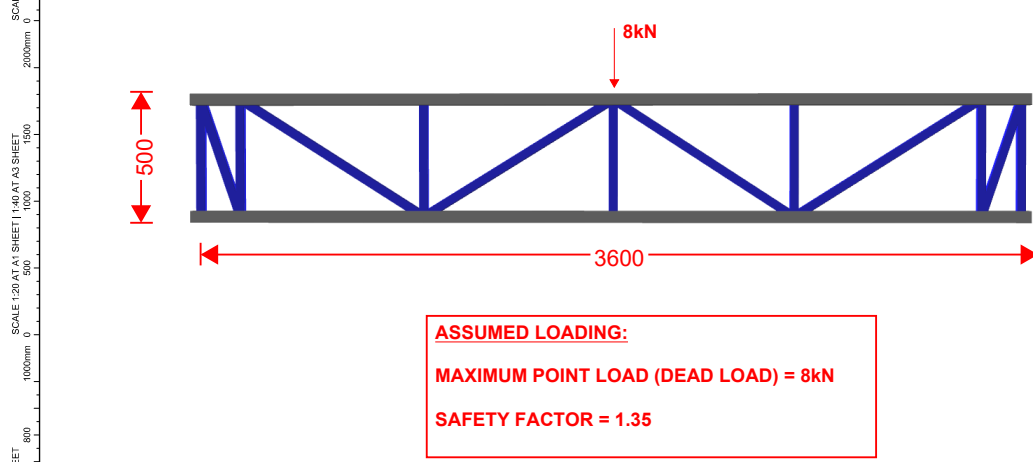
2m SPAN TRUSS - FAILURE MODE

Test Specifications
AS/NZS 1170.0-2002

10,000 Newtons = 1019kg Kilogram Force or 2248lbs Pound Force

CONNECTION TYPE	ID #	COMPRESSION NEWTONS	TENSION NEWTONS	TENSION WITH STRAP NEWTONS*
Universal Connector + Rail Insert - 0°	1	3000	2000	5600
Universal Connector + Displacement Plate + Rail Insert - 0°	2	11500	2000	5600 - Ref ID #1
Universal Connector Rotated 90° + Rail Insert - 0°	3	8500	2000 - Ref ID #1	Not Applicable
Universal Connector + Rail Insert - 11.25°	4	11000	2000 - Ref ID #1	5600 - Ref ID #1
Universal Connector + Rail Insert - 22.5°	5	12000	2000	5600
Universal Connector + Rail Insert - 45°	6	3800	2500	6000
Universal Connector + 60° Rail Insert - 60°	7	3800	3000	6000
Universal Connector + Rail Insert Load Test 1m span - 0°	8	10000	Not Applicable	Not Applicable
Post Connector + Rail Insert (4 Screws) - 0°	9	8500 - Ref ID #3	3500	Not Applicable
Post Connector + Rail Insert (4 Screws) - 22.5°	10	8000	3500	Not Applicable
Post Connector + Rail Insert (4 Screws) - 45°	11	3800	3500	Not Applicable
Star Picket Stopper	12	3500	Not Applicable	Not Applicable

* 1 Screw at each end of Galvanized 0.8mm x 30mm wide Strapping - 10gx16 Self Drilling Small Head Flat Top (Screw B)



3.6m SPAN TRUSS - FAILURE MODE